



RNSA

Royal Naval Sailing Association

Plymouth to Salcombe 1 September 2018 Salcombe to Plymouth 2 September 2018

SAILING INSTRUCTIONS

1 RULES

- 1.1 The race will be governed by the rules as defined in *The Racing Rules of Sailing* as well as RYA prescriptions, ISAF offshore racing council special regulations with RORC prescriptions.
- 1.2 Where boats are racing within the boundaries of the Port of Plymouth they are referred to the Dockyard Port of Plymouth Order 1999, a copy of which is displayed on the website (<https://www.gov.uk/government/groups/qhm-plymouth>) and Local Notices to Mariners.
- 1.3 Yachts are not permitted to pass through 'The Bridges', between Drakes Island and Cornwall.
- 1.4 Racing Rule 52 is amended to permit the use of auto helms and self-steering equipment.

2 NOTICES TO COMPETITORS

Notices to competitors will be posted on the RNSA Website, RNSA Plymouth Facebook page and Plym Yacht Club Notice Board.

3 CHANGES TO SAILING INSTRUCTIONS

Any change to the sailing instructions will be posted before 2000 on Friday 31 September 2018.

4 SIGNALS MADE ASHORE

- 4.1 Signals made ashore will be displayed from the flagstaff at end of Mountbattern breakwater.



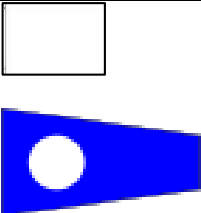



- 4.2 When Flag L (Come within hail) is displayed Last minute changes to the sailing instructions will be promulgated by VHF (Channel 72) if possible and / or by hail from the starting hut.

5 CLASS FLAGS

Class flags will be as follows:

Division	Numeral Pennant	Warning Singal
----------	-----------------	----------------

IRC Class 1	 1	Saturday: 0955 Sunday: 1025
Port Handicap Division Fully Crewed Class 2	 2	Saturday: 1000 Sunday: 1030
Port Handicap Division 2 Handed Class 2	 White over numeral 2	Saturday: 1000 Sunday: 1030
PORT HANDICAP DIVISION Category 4 with prescriptions Class 4	 4.	Saturday: 1005 Sunday: 1035

6 THE COURSE

6.1 The course for Saturday 1 September competitors shall:

1. Pass from North to South over the start line.
2. Round L4 Buoy to Port
3. Cross the finish line from South to North.

6.2 L4 Buoy is in approximate position (50° 15.0'N 004° 13.0'W, Approx 4nm south of Rame Head) normally transmitting on AIS as "L4 SCIENTIFIC BUOY" MMSI: 992351025.

6.3 The courses may be shortened by displaying flag S along with their class flag; but will be signed no later than 0930 Saturday 1 September.

6.4 When Flag S along with the appropriate class flag is displayed ashore, L4 is removed from the course and not required to be rounded.

6.4 Legs of the course will not be changed after the preparatory signal. **This changes rule 33.**

6.5 The course for Sunday 2 September competitors shall:

1. Pass from South to north over the start line.
2. Cross the finish line from South to North.

7 THE START

- 7.1** Races will be started by using rule 26 with the warning signal made 5 minutes before the starting signal.

Saturday 1 September

- 7.2** The start line will be between the Flagstaff on the PYC Startbox at Mountbatten and West Mallard Buoy.

Sunday 2 September

- 7.3** The start line will be between a yacht moored in Starhole bay and an outer distance mark.
- 7.4** Boats whose warning signal has not been made shall avoid the starting area during the starting sequence for other races.
- 7.5** A boat starting later than 20 minutes after her starting signal will be scored Did Not Start without a hearing. **This changes rule A4.**
- 7.6** If any part of a boat's hull, crew or equipment is on the course side of the starting line during the two minutes before her starting signal and she is identified, the race committee will attempt to broadcast her sail number on VHF channel 72. Failure to make a broadcast or to time it accurately will not be grounds for a request for redress. This changes rule 62.1(a).

8 THE FINISH

Saturday 1 September

- 8.1** The Finish Line will be one of the following described in 8.1.1 and 8.2.1 depending on the prevailing weather conditions.
- 8.1.1** A line between a committee vessel, a yacht anchored in Starehole bay displaying a large RNSA flag, and an outer distance marker (cylindrical Orange Racing Mark) approximately 0.3nm to the east (50° 12.80'N 003°46.45'W).
- Or**
- 8.1.2** Should the conditions not allow a committee vessel, the finish line will be a line of latitude of **50° 12.80'N** such as to extend a line from the cliffs above Starehole Bay due east.
- 8.2** The Finish line will be manned and competitors should call "RNSA MOBILE" on VHF Ch 72 when rounding Bolt Head. The race committee will make every effort to advise the fleet while racing which line is to be used. If in any doubt competitors should take times for the finish at **8.1.2**. The Race committee will acknowledge all finishers on VHF Channel 72.
- 8.3** Individuals are responsible for recording their own finish time (in British Summer Time). Additionally on Saturday only complete a declaration form. A manned finish line does not remove the need for a declaration from.

Sunday 2 September

8.4 The finish line will be between the Flagstaff on the PYC Startbox at Mountbatten and West Mallard Buoy.

8.5 A declaration form is not required for Sunday.

9 PENALTY SYSTEM

9.1 The Scoring Penalty, rule 44.3, will apply. The penalty will be 20% of the number of boats entered in that boats division.

10 TIME LIMIT

10.1 For Saturday the Time limit will be 1800 BST Saturday 1 September 2018.

10.2 For Sunday the time limit will be 1800 BST Sunday 2 September 2018

11 RETIREMENTS

11.1 Any boat which retires shall make every effort to communicate this fact to the RNSA race committee (at the earliest opportunity either Via VHF CH 72 or contact the RNSA Offshore Sec (07840972344)).

12 PROTESTS AND REQUESTS FOR REDRESS

12.1 Protests must be made in writing and lodged with the Race Officer not later than two hours after finishing. It is anticipated that the race officer will be on board the yacht 'Sorcerer of Tamar" moored on the bag pontoon. In the event that the protesting yacht retires and does not proceed to the finish then the protest should be posted to the RNSA Offshore Secretary within 24 hours of retiring. This changes Rule 61.3.

12.2 The Exoneration Penalty and the Advisory Hearing and RYA Arbitration procedures of the RYA Rules Disputes procedures shall apply. The outcome of an RYA Arbitration can be referred to a protest committee, but an arbitration cannot be reopened or appealed. See the Official Notice Board for details.

12.2 The Race Officer/RNSA Offshore Secretary will inform all parties to the protest of the time and place of the hearing.

13 SAFETY REGULATIONS

13.1 All boats shall comply with The World Sailing **Offshore Special Regulations (OSR) Category 3 & 4 and RORC 2018 prescriptions**. Full details are at Annex A.(www.sailing.org/specialregs).

14 RADIO COMMUNICATION

14.1 Except in an emergency, a boat shall neither make radio transmissions while racing nor receive radio communications not available to all boats. **This restriction also applies to mobile telephones.**

14.2 The primary **VHF channel will be channel 72.**

15 PRIZES

15.1 Prizes will be awarded at the RNSA prize giving for each Division/Class in proportion to the number of starters as follows:

1-5 entries 1st

6-10 entries 1st, 2nd.

11+ entries 1st, 2nd, 3rd.

16 RISK STATEMENT

Rule 4 of the Racing Rules of Sailing states: "The responsibility for a boat's decision to participate in a race or to continue racing is hers alone." Sailing is by its nature an unpredictable sport and therefore inherently involves an element of risk. By taking part in the event, each competitor agrees and acknowledges that:

- 16.1** They are aware of the inherent element of risk involved in the sport and accept responsibility for the exposure of themselves, their crew and their boat to such inherent risk whilst taking part in the event;
- 16.2** They are responsible for the safety of themselves, their crew, their boat and their other property whether afloat or ashore;
- 16.3** They accept responsibility for any injury, damage or loss to the extent caused by their own actions or omissions;
- 16.4** Their boat is in good order, equipped to sail in the event and they are fit to participate;
- 16.5** The provision of a race management team, other officials and volunteers by the event organiser does not relieve them of their own responsibilities;
- 16.6** The provision of patrol boat cover is limited to such assistance, particularly in extreme weather conditions, as can be practically provided in the circumstances;
- 16.7** It is their responsibility to familiarise themselves with any risks specific to this venue or this event drawn to their attention in any rules and information produced for the venue or event and to attend any safety briefing held at the venue.
- 16.8** They are responsible for ensuring that their boat is equipped and seaworthy so as to be able to face extremes of weather; that there is a crew sufficient in number, experience and fitness to withstand such weather; and that the safety equipment is properly maintained, stowed and in date and is familiar to the crew;

17 INSURANCE

Each participating boat shall be insured with valid third-party liability insurance with a minimum cover of £3,000,000 per incident or the equivalent.

18 FURTHER INFORMATION

For further information please contact RNSA Plymouth offshore Sec (Edward Pearson)

Edward Pearson

07840972344

01752 509208

RNSA.OFFSHORE@gmail.com

RNSA (Plymouth) Offshore Sec

Annex A – Entry requirements

PORT HANDICAP DIVISION Category 4 with prescriptions

Yachts entering this class must comply with **OSR Category 4 requirements and the following additionally requirements**

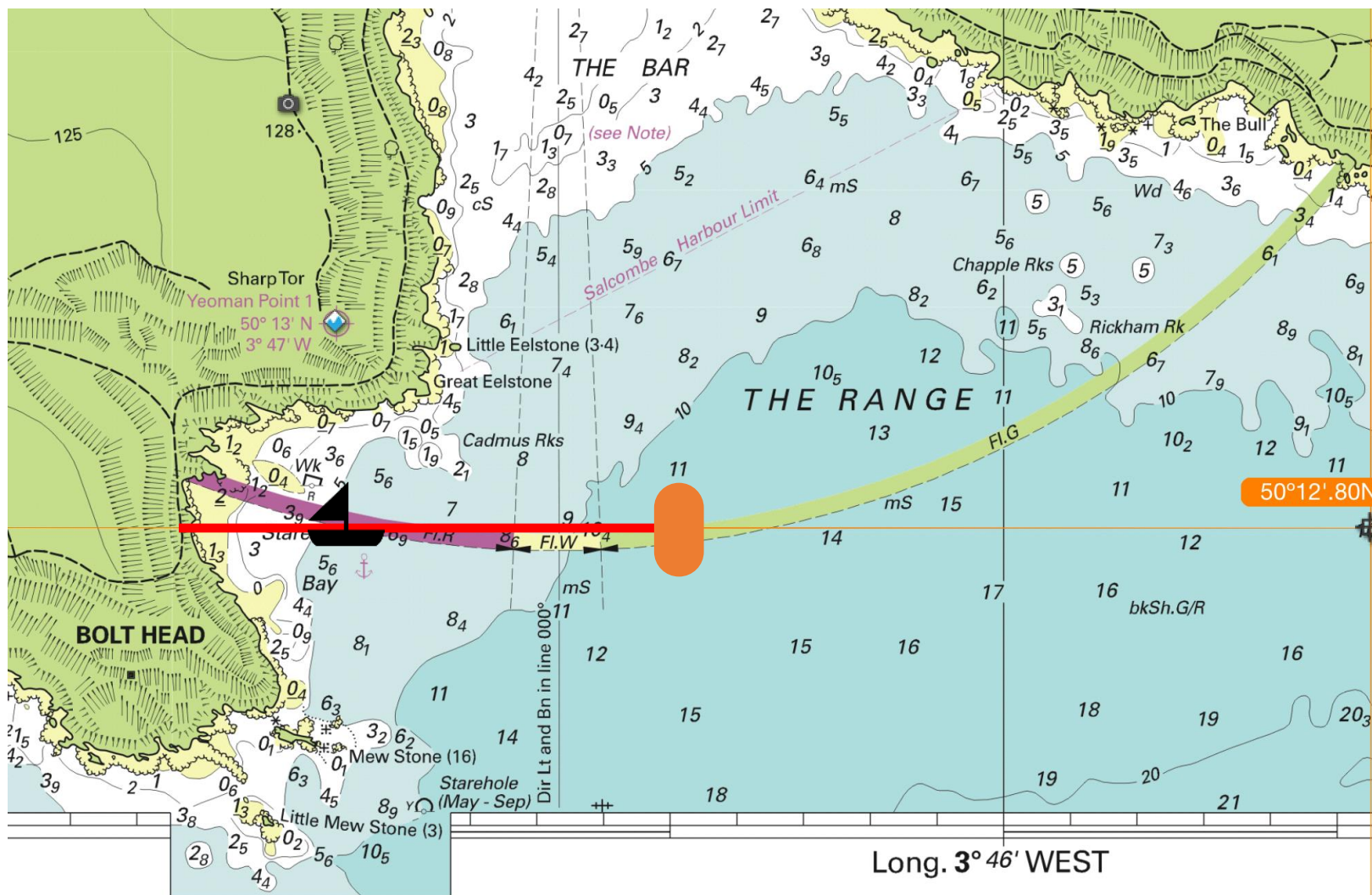
Additional World offshore sailing regulations:	3.21.3 3.28.1 b) 3.28.3 b) 3.29.01 3.29.02 a) b) 3.29.08 4.04 (all) 4.07 (all) 4.15.1 4.22.8 4.23 (all) 4.26.2a i) 4.26.2d vii) 5.01.1 b), d) 5.02	Emergency Water Engine Fuel carried VHF VHF GPS Jackstays Lights Emergency Tiller Recovery sling Flares Heavy Weather jib Reefing Lifejackets Harness and Tethers
RNSA imposed condition.	EX1 EX2	Comply with RCD Cat C or STIX of 14 or equivalent Stability statement as issued by the Port of Plymouth handicapper. One Thermal Protective Aid and 1 sleeping bag in a waterproof bag.
Starting weather prediction limits	For a predicted wind of Max force 5 (21 Kts) and expected Max wave height limited to 2 Meters in order to start a race.	

IRC Division, PORT HANDICAP DIVISION & PORT HANDICAP DIVISION Two handed Division

Yachts entering this class must comply with **OSR Category 3 requirements and the following additionally requirements**

Additional World offshore sailing regulations:	4.20.1 Liferaft
RNSA imposed condition.	EX1 One Thermal Protective Aid and 1 sleeping bag in a waterproof bag.
Starting weather prediction limits	For a predicted wind of Max force 7 (33 kts) and expected Max wave height limited to 4 Meters in order to start a race.

The Salcombe start and finish



Not to be used for navigation



RNSA

Royal Naval Sailing Association

(Plymouth Branch in conjunction with PYC)

COASTAL PASSAGE RACE DECLARATION FORM

Please complete form in CAPITALS, sign & hand to a member of RNSA Race Committee at the finish, on board Sorcerer of Tamar (committee boat).

I declare that I was onboard the yacht

whilst sailing from PLYMOUTH to Salcombe on ...1 September 2018

I further declare that all Racing Rules and Sailing Instructions were observed and that our **Finishing Time** in **BST** (NOT ELAPSED) was :-

Hour	Minute	Second

Name of Yacht Ahead and Astern		Sail Number (if visible)
Ahead		
Astern		

Signature Print Name

Date

Please return completed & signed declarations to a member of the RNSA Race Committee after finishing.