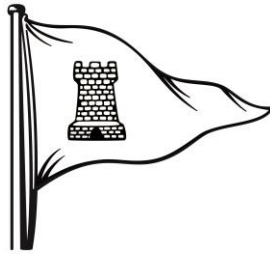


Coningham Cup Sonar Regatta 2017

16th and 17th September

Hosted by Island Sailing Club,
Cowes



SAILING INSTRUCTIONS

The ISC Sonars are
sponsored by



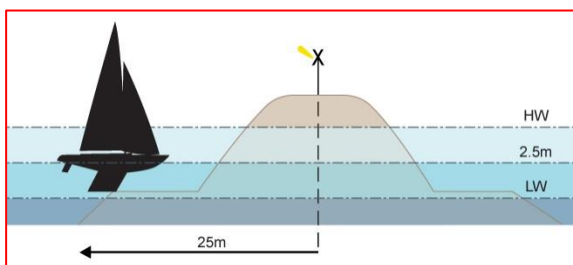
SAILING INSTRUCTIONS

All times are BST

Dates	High Water
16 th September	0857 4.2m & 2121 4.3m
17 th September	1002 4.4m & 2215 4.4m

1. Rules

- 1.1 Racing will be governed by the current Racing Rules of Sailing (RRS), the prescriptions of the Royal Yachting Association, the Sonar Association Class Rules and these Sailing Instructions (SIs). In the event of a conflict the SIs shall prevail.
- 1.2 The **Precautionary Area** referred to in Associated British Ports Byelaw 11 shall rank as an obstruction to boats racing (See appendix A at the end of this document).
- 1.3 RRS 35 is varied in SI 15 and RRS 60 and RRS 61.2 are varied in SI 16.
- 1.4 Competitors are reminded of their obligation to keep clear of other boats, if reasonably possible, regardless of Racing Rules. In the event of any contact causing damage, all boats in the incident will be disqualified regardless of blame.
- 1.5 Competitors shall keep at least 50m away from the new Cowes harbour breakwater so as to avoid the underwater footings. See: www.cowesharbourcommission.co.uk/cowes_breakwater



2. Entries

There shall be no race unless two boats start.

3. Communication with Competitors

- 3.1 Notices to competitors will be posted on the official notice board which can be found in the Lower Marquee at the Island Sailing Club, Cowes.
- 3.2 Where possible and when required, announcements will be made over VHF radio on channel P2 (ISC Private) to competitors. Radios will be provided.

4. Boats

- 4.1 Boats will be provided for all competitors, who shall not modify them or cause them to be modified in any way.
- 4.2 The penalty for not complying with the above instruction will be disqualification from all races sailed in which the instruction was broken.
- 4.3 Competitors shall report any damage or loss of equipment, however slight, to the organizing authority's representative immediately after returning ashore. The penalty for breaking this instruction, unless the protest committee is satisfied that the competitor made a determined effort to comply, will be disqualification from the race most recently sailed.
- 4.4 Class rules requiring competitors to be members of the class association will not apply.

5. Changes to Sailing Instructions

Any changes to the sailing instructions will be posted on the official notice board which can be found in the Lower Marquee at the Island Sailing Club, Cowes. Changes will be also announced at the 1800hrs race briefing.

6. Signals Made Ashore

- 6.1 Signals made ashore will be displayed at the flagstaff of the ISC.
- 6.2 Flag AP over AP with two sound signals means that racing is postponed. The warning signal of the first race after such a postponement will be made not less than 30 minutes after one AP is lowered with one sound signal.
- 6.3 In the event of insufficient or excessive wind at the scheduled warning signal time, a postponement or abandonment will be signalled by the race committee boat and/or ashore.

7. Schedule of Races

A race briefing will take place in the ISC Lower Marquee at 1000hrs on Saturday 16th September and at 0900hrs on Sunday 17th September.

Practice racing may be offered on Saturday before the series scoring begins. The number of practice races will be agreed at the Saturday briefing.

All skippers and crews are required to attend.

- 7.1 Race 1 Warning Signal will not be before **1100hrs**. Subsequent races will follow as soon as possible after the previous race. It is the intention of the Race Committee to run as many races as possible each day until _____hrs.
- 7.2 To avoid delays between races, all competitors are required to stay in close proximity to the Committee Vessel after completing each race.

8. Class Flag

Sonars International Code Flag T

9. Racing Area

The racing area will generally be in the Central Solent or over the Shrape area, just North / East of the Cowes Harbour breakwater.

10. The Course and Marks

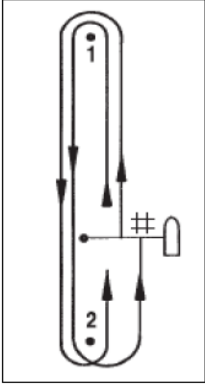
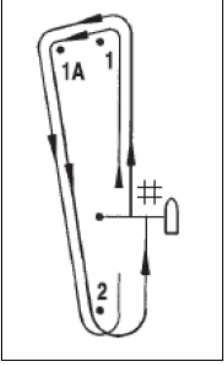
The course for each race will be windward/leeward type and will consist of a series of specially laid marks and will be either Course A or B as detailed below. The course letter will be displayed on the Committee

Vessel. If for any reason, a different course is to be sailed, details will be given either at the briefing or to each boat on the water.

When the letter displayed on the Committee Boat is Red, all marks are to be left to Port and when it is Green, all marks are to be left to Starboard.

Course A: Windward mark, leeward mark, through the start/finish line, windward mark, leeward mark and pass through the start/finish line to finish. (1 – 2 – # – 1 – 2 – Finish)

Course B: Windward mark, spreader mark, leeward mark, through the start/finish line, windward mark, spreader mark, leeward mark and pass through the start/finish line to finish. (1 – 1A – 2 – # – 1 – 1A – 2 – Finish)

Course A	Course B
	
<p>Start - 1 - 2 - # - 1 - 2 Finish</p>	<p>Start - 1 – 1A - 2 - # - 1 – 1A - 2 Finish</p>

11. The Start

11.1 The starting line is between a staff or halyard bearing an orange flag on the committee boat and an Outer Distance Mark (ODM), which is the nearby inflated mark.

11.2 The starting sequence will be 5 – 4 – 1 – Go (see RRS 26).

12. Recalls

Sail numbers of individually recalled boats may be hailed from the committee boat but not before 15 seconds after the start.

Delay or failure to hail a recalled sail number by the committee boat shall not be grounds for redress.

13. Change of Course after the Start

The positions of any laid mark(s) may be adjusted by up to plus or minus 10 degrees relative to the previous laid mark(s) and up to 5 cables windward or leeward without the signalling of *Changing Race Signals Flag* "C" or + or -.

14. The Finish

The finishing line is between the staff or halyard displaying an orange flag on the committee boat and the ODM, which is the nearby inflated mark. (Same as the starting line see SI 11).

15. Time Limits

Unless otherwise amended in accordance with SI 3 or 5, the time limit is **30 minutes per race**. Should no boat finish within the time limit, the result of the race will be determined from the previous time that the finishing line was crossed, or where all the boats were all recorded at a rounding mark. Boats not finishing within 7 minutes after the first boat finishes or within the time limit, whichever is the later, will be scored "Did Not Finish". This changes RRS 35.

16. Protests and Alternative Penalties

This is a freindly event with the emphasis being on the spirit of fair competition and fun with no brinkmanship.

Penalties shall be taken on the water:

a One Turn Penalty (to include one tack and one gybe) shall be taken for touching a mark and **a Two Turn Penalty** (to include two tacks and two gybes) for all other Rule infringements.

Any other formal Protests will be heard as soon as possible after racing.

RRS 61.2 is changed in that protest forms, which are available from the ISC entrance lobby at the ISC bar, Official Notice board or website must be submitted to a member of the Race Committee within 20 minutes of the last boat crew being landed ashore after racing.

17. Scoring

The scoring will use the low point system in RRS Appendix A.

One Race will constitute a series

Discards will follow this pattern:

Races Completed	1	2	3	4	5	6	7	8	9
Races scored	1	2	3	3	4	5	5	6	7

18. Declarations and Retirements

Declarations are not required. Boats shall notify retirements to the race committee at the earliest opportunity.

19. Results and Prizes

19.1 Results will be posted on the Official Notice Board as soon as possible after the **last race** has finished.

19.2 Prizegiving will take place in the ISC on Sunday after racing. **Target time 1430hrs.**

20. Hired Boats

Chartered or hired boats shall not be able to seek redress in the event of gear or equipment failure.

22. Risk Statement

RRS 4 states: "The responsibility for a boat's decision to participate in a race or to continue racing is hers alone," Sailing is by its nature an unpredictable sport and therefore inherently involves an element of risk. By taking part in this series, each competitor agrees and acknowledges that:

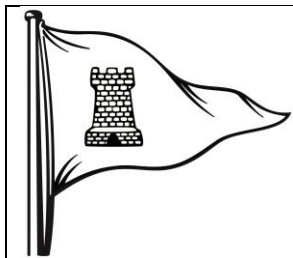
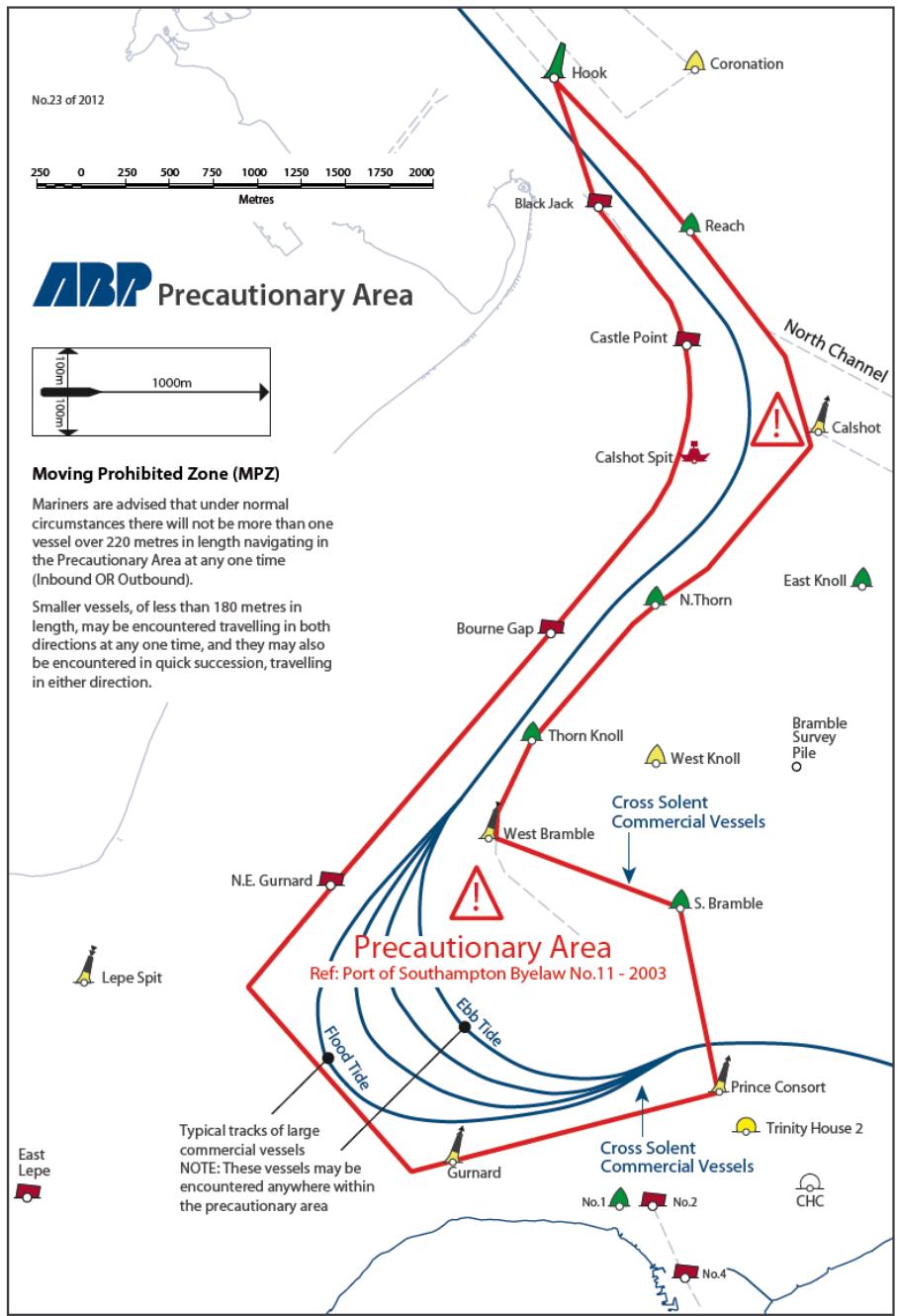
- 22.1 They are aware of the inherent element of risk involved in the sport and accept responsibility for the exposure of themselves, their crew and their boat to such inherent risk whilst taking part in the series;
- 22.2 They are responsible for the safety of themselves, their crew, their boat and their other property whether afloat or ashore;
- 22.3 They accept responsibility for any injury, damage or loss, to the extent caused by their own actions or omissions;
- 22.4 Their boat is in good order, equipped to sail in the series and they are fit to participate;
- 22.5 The provision of a race management team, patrol boats and other officials and volunteers by the event organiser does not relieve them of their own (the competitors') responsibilities;
- 22.6 The provision of patrol boat cover is limited to such assistance, particularly in extreme weather conditions, as can be practically provided in the circumstances.
- 22.7 They are responsible for ensuring that their boat is equipped and seaworthy so as to be able to face extremes of weather and there is a crew number sufficient in number, experience and fitness to withstand such weather; and that the safety equipment is properly maintained, stowed and in date and is familiar to the crew.

23. RYA Charter

Competitors should note that Island Sailing Club implements the RYA Racing Charter and that competitors are required to sail in compliance with the Charter, which can be found at the front of the RYA rule book (Racing Rules of Sailing 2017-2020) or at www.rya.org.uk/racing/charter



APPENDIX A



Chris Thomas - Island Sailing Club

01983 249431

chris@islandsc.org.uk

END



Island Sailing Club

SONAR FLEET

Matched fleet of 9 professionally maintained boats available for charter



- For Racing or Cruising (including match and team racing)
- Race Management team available to help plan and run your event
- Launch Service to moorings north of the Floating Bridge
- Comfortable accommodation in convenient location next to Club
- Showers and Changing Rooms
- Roof terrace, marquee and barbecue area available for Lunches, Suppers and BBQ
- Regatta Dinners or informal dining in the Restaurant

Entire days organised by us

Email: racing@islandsc.org.uk

Tel: 01983 249431 **Fax:** 01983 293214

Island Sailing Club, 70 High Street, Cowes, Isle of Wight. PO31 7RE