

Royal Cruising Club Pilotage Foundation



Atlantic France

3rd Edition 2023

ISBN 978 178679 374 4

Supplement No. 3: March 2026

This replaces all previous supplements

Further updates are available, as they come in, via the Cruising Notes page of the Pilotage Foundation website at www.rccpf.org.uk/Pilotage-Notices

Caution

Whilst the Royal Cruising Club Pilotage Foundation, the author and the publishers have used reasonable endeavours to ensure the accuracy of the contents of this book, it contains selected information and thus is not definitive. It does not contain all known information on the subject in hand and should not be relied upon alone for navigational use: it should only be used in conjunction with official hydrographical data. This is particularly relevant to the plans, which should not be used for navigation. The Royal Cruising Club Pilotage Foundation, the author and the publishers believe that the information which they have included is a useful aid to prudent navigation, but the safety of a vessel depends, ultimately, on the judgment of the skipper, who should access all information, published or unpublished. The information provided in this book may be out of date and may be changed or updated without notice. The Royal Cruising Club Pilotage Foundation cannot accept liability for any error, omission or failure to update such information. To the extent permitted by law, the Royal Cruising Club Pilotage Foundation, the author and the publishers do not accept liability for any loss and/or damage, howsoever caused, that may arise from reliance on information contained in these pages.

This supplement contains amendments and corrections sent in by a number of cruising yachtsmen and women, in addition to those culled from official sources such as Notices to Mariners.

Positions and waypoints

All positions and waypoints are to datum WGS84. They are included to help locating place, features and transits. Do not rely on them alone for safe navigation.

Bearings and lights

Any bearings are given in degrees True and from seaward. The characteristics of lights may be changed during the lifetime of this book and they should be checked against the latest edition of the UK Admiralty List of Lights.

Note Where lights have been modified in the text do please remember to alter them on the appropriate plan(s).

This supplement is cumulative and the latest information is marked in **blue**.

Acknowledgements

Charles Nodder, Nicholas Bailhache, Doug MacArthur, Rex Frost, Nick Ellis, Henry Pearson, Graham Parker, George Curtis, Emmanuel Bontent, Richard Kingsnorth, Judith Grimwade, Robert Matthews, Nicholas Charman, Tim Beck, Jonno Barrett, Jane Russell

Page 35 Île Molène

There are four buoys in deeper water (about 2.5 LAT) just outside the first mole from the north. Not comfortable for WNW swells where hiding further in is better.

In southerly winds, any swell coming in is broken by the bar at the south of the harbour, so depths at low water aren't affected – it covers at about ¼ tide, so leaving the harbour calm.

The leading marks on the Easterly Channel (Chenal de Laz) are very hard to pick up from the Four side, and even quite close in.

Page 39 Le Conquet

Camaret no longer does Customs clearance (as they are preparing for the new EES Scheme) but emailed a list of ports and marinas that do.

Arrived in Le Conquet and picked up a deep water mooring by the fishing fleet (two white buoys on the outside of the fishing boat moorings). The Harbour master arrived the next morning, very friendly and told us we could stay on the mooring. Ashore he was very helpful in processing the customs form despite not having done it before. The door to the port office is round the back of the ferry ticket office. Water, toilet and showers on the quay. Good patisserie / boulangerie up the hill in pretty town.

Page 52 Brest

Customs office to have passports stamped to enter/leave Schengen. Open 0830–1500 Mon–Fri. In normal working hours, no appointment required. It is possible to make an appointment in advance for Sat, Sun and public holidays. 5min walk from Brest Marina du Chateau. Address 14 Quai de la Douane, 29229 Brest, ☎+33 9 70 27 51 58, <https://w3w.co/scan.someone.downturn>, bse-brest@douane.finances.gouv.fr.

Page 56 L'Aulne, Port Launay

Beautiful river: it takes about 1.5 hours to travel from the river entrance at the Rade de Brest, Landevennec to the lock at Guily Glaz. There is a pontoon and moorings at

Landevennec. We found about 5.5m depth at high springs as far as the lock.

Inside the lock, it is a further ½ mile to Port Launay – we found 3.5m depth.

Moor alongside at Port Launay: pleasant but not much there, just a small Tabac and Bar, no Boulangerie. Electricity on the quays and showers in white house with blue windows near the start of the mooring spaces. Each uses jetons (4 hours electric, 10 mins shower) available from Bar Ty Mad on the corner of the square. Public toilets on quay.

Page 60 L'Aulne, Chateaulin

Chateaulin offers a wide range of shops and restaurants including a very well-placed eLeclerc supermarket about 100m from the pontoon. There is an excellent Thursday market on the bank below the road bridge. The channel from Port Launay is reported to offer 2.7m, with deeper water on the port side going up.

There is a small pontoon just before the Leclerc which boasts an off lying rock. There is a well featured pontoon on the starboard side above this, shallower at the far end. Electricity and water require jetons as at Port Launay. Max. stay between Apr–Oct is 72 hours.

Page 122 L'Aven and Port Manec'h

In offshore winds, good anchorage east of visitor moorings. Dinghy to the pontoon along the quay inside the breakwater. Toilets and shower at top of pontoon ramp.

Page 136 Lorient

Lorient is a port of entry for the Schengen area, useful if sailing from southwest UK and wishing to avoid Brest. The customs office is located towards the main fishing part of the harbour. 94 Av. de la Perrière, 56100 Lorient, generally only open Monday to Friday, 0800–1330, or by appointment (☎+33 9 70 274964). An email of the entry/exit form can be sent to bse-orient@douane.finances.gouv.fr in advance. At Douanes and Droits Indirects (customs) they will scan and stamp passports for arrivals/departures. They can be quite hard to get hold of but are friendly (and speak some English) when you do get through.

Page 146 Port Louis, Locmalo

Moorings to the east and northeast of the Belorç'h port and starboard beacons do limit the anchoring area and there is no clear 'pool' with any depths but it is possible to find a spot clear of the moorings in the channel to Locmalo quay. A small ferry runs to-and-fro between Locmalo quay and Gavres so try to keep clear of the middle of the channel. At peak flow the tide runs strongly through the mooring and anchoring area.

Page 151 Locmaria, Île de Groix

There are no official visitors' moorings. It may be possible to borrow a mooring or anchor outside the moorings.

Page 164 Le Palais, Belle-Île

In 2023, the harbour authorities at Le Palais have installed six new mooring buoys east of the north pier for the use of visiting yachts. There are now about a dozen buoys there including those used by local vedettes.

Page 171 Île Houat

There is an area with buoyed fishing equipment lying in a rectangle 0.2 miles wide and between 0.4 and 1.1 miles bearing 029° from La Vielle rock. The equipment is marked by lit cardinal marks to the north and east and lit yellow marks on the other two corners. [It is marked on new

charts but not on the plan on page 171 of *Atlantic France*, 3rd edition.]

Page 186 L'Auray, Cesar

Lovely anchoring spot in 4m pool (shown on Navionics sonar layer) just downstream of PHB Cesar in front of house on the west shore at the start of the branch up to Auray. Anchor fore-and-aft if necessary to keep to side of channel. Dinghy to crumbling quay and slip on southeast side of Pte de Kerisper for pleasant walks to Bono (30 mins) or up to Auray (60 mins).

Page 193 Golfe du Morbihan, Île de l'Oeuf

Good anchorage in 3–4m on sand, to NW of Île de l'Oeuf, just east of mooring buoys. Well protected from N–W–SW. Open to E. Dinghy ashore to small beach by boatyard pontoon. Lovely walks ashore to main village.

Page 206 Pénerf

A new marina was installed in 2022. It is situated 75m east of the jetty. It consists of one long pontoon attached to the shore with space for about eight boats. From April to October there is an additional detached pontoon situated outside the main pontoon suitable for deeper draught yachts.

Page 208 La Vilaine to Arzal, Arzal Lock

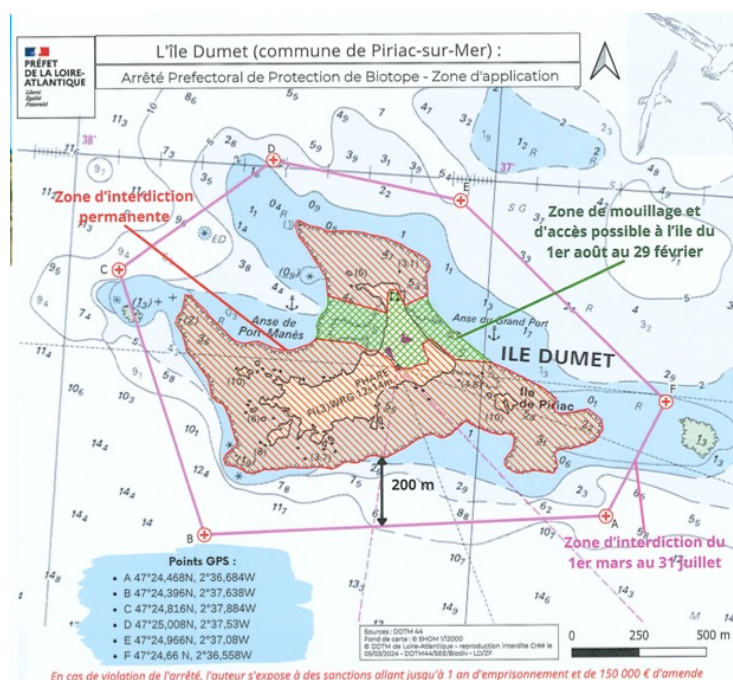
Heading into the river, the Arzal Lock waiting pontoon closest to the lock is subject to cross flows as the lock empties. It is also quite exposed to the onshore sea breeze which can pin you onto it.

Page 215 Redon

The marina, to the north of the old sea lock, is no longer accessible to visiting yachts. There is an opening footbridge over the old lock. The visitor's pontoon is in front of the new port office on the northwest side of the approach channel, to seaward of the old lock. All is very well marked. The fuel berth is in the mainstream of La Vilaine, about 0.25M south of the entrance to the Redon approach channel.

Page 217 Île Dumet

Île Dumet is a bird sanctuary, and anchoring off the island is only possible from 1 Aug to 29 Feb. See plan below:

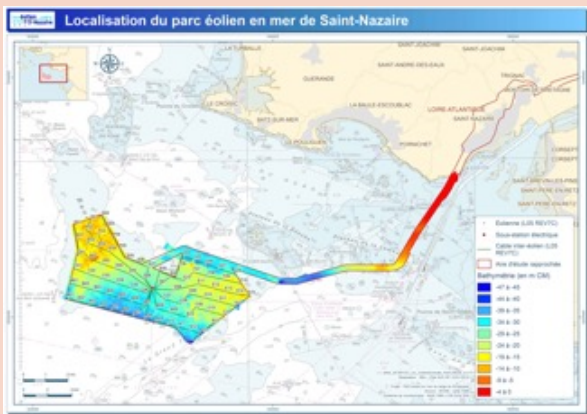


Page 218 St Nazaire Wind Farm

A major wind farm, consisting of 80 wind turbines, has been constructed on the Banc de Guerande, adjacent to Le Croisic, Le Pouliguen, Pornichet and St Nazaire in an area bordered by the following positions:

NW point	47°12'.36N 2°42'.16W
NE point	47°10'.31N 2°30'.40W
SW point	47°10'.51N 2°41'.98W
SE point	47°06'.72N 2°32'.91W

Navigation through the wind farm is now permitted as the construction phase is complete. See chart below.



Page 249 Île d'Yeu

Obstruction Warning: Île d'Yeu, Anse des Vieilles
At 46°41.495'N 002°18.854'W Anse des Vieilles, there is an uncharted obstruction at a depth of 1m below Chart Datum. Yacht Sea Crusader struck the object when 1m rise of tide and sustained damage to keel. Obstruction possibly made by a sunk container. [report from owner of Discovery 55 Sea Crusader]

Page 278 La Rochelle

The shellfish growing area, south of La Rochelle and centred on 46°3.961'N 001°9.853'W has been extended. The three buoys demarcating the west side of the shellfish growing area between the Angoulins plateau and the island of Aix have been moved to the west.

- The northern buoy of the Rade des Basques (shellfish growing zone) has been moved to its new final position: 46°04.76N 001°10.44W
- The special intermediate mark buoy west of the Basque harbour (shellfish farming zone) has its new definitive position: 46°03.97N 001°10.31W
- The west buoy of the Rade des Basques (shellfish farming zone) has been moved to its new final position: 46°03.17N 001°10.18W

Page 280 Île d'Aix

Report in October 2023 that the sandbank extending south from Fort Boyard has moved at least 300m further south than that shown on charts. Recommended to stay south of Longe Boyard south cardinal mark.

Page 287 Rochefort

Rochefort does silt up and dredging is a rare event! The chartlet on page 286 shows a datum of 2m in the channel between the 2 basins. The Capitainerie documents show HW at 1021 of 4.78m (coefficient of 46), Navionics shows

between 0 and 0.5m at this point. We have a 2.3m draught and have grounded solid, which indicates that in this channel there is an equivalent drying height of circa 2.6m! [report dated 13 June 2024]

Page 313 Royan

The Cockleshell Heroes memorial is temporarily closed and fenced off (July 2023). The issue seems to be loose rock on the cliff edges. You can just see the monument from about 50m away. The lighthouse is open, but check times. Walking from the marina it's a 10km round trip.

Page 327 Bordeaux

Bordeaux dock area adjacent to the bassins à flot is being refurbished over a period of several years. It has been transformed since 2016 when it was in a very poor state of repair. It is now in a position to welcome visiting yachts which will enjoy excellent facilities and a great opportunity to experience a visit to Bordeaux.

Lock in to Bassin à Flot No.2 which opens everyday and the timings may be found online (www.bordeaux-port.fr). There are now showers and toilets and the marina area is secure. There is a waiting pontoon just up-stream of the lock entrance, on starboard side, towards Pont de Chaban Delmas.

Demasted yachts and motor boats with max air draft of 5.4m may pass under the Pont Chaban Delmas when the bridge is down. There is a delightful 155m visitors' pontoon, the Ponton d'Honneur on the west bank just downstream of the Pont du Pierre. It is run by the Mairie (not the port). See www.bordeaux-metropole.fr/ for more details. Details of bridge lifting dates may be found at sedeplacer.bordeaux-metropole.fr

Page 332 Arcachon

In 2023 the buoyage at the entrance was different from that shown on digital charts and pilot book. Cap Ferret semaphore (☎+33 5 56 223686) gives the the position of the outer buoy as 44.3316N, 001.185W. After that the well buoyed channel heads inshore before turning to port and on to the channel towards Arcachon. Arcachon is a delightful holiday resort with much boating activity and every sort of marine facility to support this. Note that the entrance to Arcachon changes on a regular basis due to shifting sandbanks.