

RCC Pilotage Foundation

## Atlantic France

3rd Edition 2023

ISBN 978 178679 374 4



### Supplement No. 1: Supplement March 2024

**This replaces all previous supplements**

Further updates are available, as they come in, via the Cruising Notes page of the Pilotage Foundation website at [www.rccpf.org.uk/Pilotage-Notices](http://www.rccpf.org.uk/Pilotage-Notices)

### Caution

Whilst the RCC Pilotage Foundation, the author and the publishers have used reasonable endeavours to ensure the accuracy of the contents of this book, it contains selected information and thus is not definitive. It does not contain all known information on the subject in hand and should not be relied upon alone for navigational use: it should only be used in conjunction with official hydrographical data. This is particularly relevant to the plans, which should not be used for navigation. The RCC Pilotage Foundation, the author and the publishers believe that the information which they have included is a useful aid to prudent navigation, but the safety of a vessel depends, ultimately, on the judgment of the skipper, who should access all information, published or unpublished. The information provided in this book may be out of date and may be changed or updated without notice. The RCC Pilotage Foundation cannot accept liability for any error, omission or failure to update such information. To the extent permitted by law, the RCC Pilotage Foundation, the author and the publishers do not accept liability for any loss and/or damage, howsoever caused, that may arise from reliance on information contained in these pages.

This supplement contains amendments and corrections sent in by a number of cruising yachtsmen and women, in addition to those culled from official sources such as Notices to Mariners.

#### Positions and waypoints

All positions and waypoints are to datum WGS84. They are included to help locating place, features and transits. Do not rely on them alone for safe navigation.

#### Bearings and lights

Any bearings are given in degrees True and from seaward. The characteristics of lights may be changed during the lifetime of this book and they should be checked against the latest edition of the UK Admiralty List of Lights.

Note Where lights have been modified in the text do please remember to alter them on the appropriate plan(s).

This supplement is cumulative and the latest information is marked in **blue**.

#### Acknowledgements

Charles Nodder, Nicholas Bailhache, Doug MacArthur, Rex Frost, Nick Ellis, Andrew Wilkinson, Henry Pearson, Graham Parker, George Curtis, Euan McAlpine Armstrong.

#### Page 52 Brest

Customs office to have passports stamped to enter or leave Schengen, open Monday to Friday, 0800-1200 and 1400-1800. No appointment required. Five minute walk from Brest Marina du Chateau  
[w3w.co/scan.someone.downturn](http://w3w.co/scan.someone.downturn)

#### Page 136 Lorient

Lorient is a port of entry for the Schengen area, useful if sailing from southwest UK and wishing to avoid Brest. The customs office is located towards the main fishing part of the harbour. 94 Av. de la Perrière, 56100 Lorient, generally only open Monday to Friday, 0800-1330, or by appointment (☎+33 9 70 274964). An email of the entry/exit form can be sent to [bse-lorient@douane.finances.gouv.fr](mailto:bse-lorient@douane.finances.gouv.fr) in advance. At Douanes and Droits Indirects (customs) they will scan and stamp passports for arrivals/departures. They can be quite hard to get hold of but are friendly (and speak some English) when you do get through.

#### Page 151 Locmaria, Île de Groix

There are no official visitors' moorings. It may be possible to borrow a mooring or anchor outside the moorings.

#### Page 164 Le Palais, Belle-Île

In 2023, the harbour authorities at Le Palais have installed six new mooring buoys east of the north pier for the use of visiting yachts. There are now about a dozen buoys there including those used by local vedettes.

#### Page 206 Pénerf

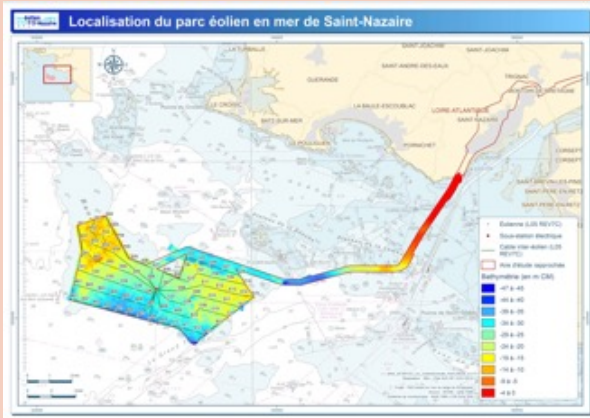
A new marina was installed in 2022. It is situated 75m east of the jetty. It consists of one long pontoon attached to the shore with space for about eight boats. From April to October there is an additional detached pontoon situated outside the main pontoon suitable for deeper draught yachts.

## Page 218 St Nazaire Wind Farm

A major wind farm, consisting of 80 wind turbines, has been constructed on the Banc de Guerande, adjacent to Le Croisic, Le Pouliguen, Pornichet and St Nazaire in an area bordered by the following positions:

NW point	47°12'.36N 2°42'.16W
NE point	47°10'.31N 2°30'.40W
SW point	47°10'.51N 2°41'.98W
SE point	47°06'.72N 2°32'.91W

Navigation through the wind farm is now permitted as the construction phase is complete. See chart below.



## Page 278 La Rochelle

Report that dredging is taking place throughout the winter until May 2024 in the La Rochelle main channel, Port des Minimes and Vieux Port. Keep clear if you see the dredging operation.

## Page 280 Île d'Aix

Report in October 2023 that the sandbank extending south from Fort Boyard has moved at least 300m further south than that shown on charts. Recommended to stay south of Longe Boyard south cardinal mark.

## Page 313 Royan

The Cockleshell Heroes memorial is temporarily closed and fenced off (July 2023). The issue seems to be loose rock on the cliff edges. You can just see the monument from about 50m away. The lighthouse is open, but check times. Walking from the marina it's a 10km round trip.

## Page 332 Arcachon

In 2023 the buoyage at the entrance was different from that shown on digital charts and pilot book. Cap Ferret semaphore (☉+33 5 56 223686) gives the the position of the outer buoy as 44.3316N, 001.185W. After that the well buoyed channel heads inshore before turning to port and on to the channel towards Arachon. Arcachon is a delightful holiday resort with much boating activity and every sort of marine facility to support this. Note that the entrance to Arcachon changes on a regular basis due to shifting sandbanks.

## Page 327 Bordeaux

Bordeaux dock area adjacent to the bassins à flot is being refurbished over a period of several years. It has been transformed since 2016 when it was in a very poor state of repair. It is now in a position to welcome visiting yachts which will enjoy excellent facilities and a great opportunity to experience a visit to Bordeaux.

Lock in to Bassin à Flot No.2 which opens everyday and the timings may be found online ([www.bordeaux-port.fr](http://www.bordeaux-port.fr)). There are now showers and toilets and the marina area is secure. There is a waiting pontoon just up-stream of the lock entrance, on starboard side, towards Pont de Chaban Delmas.

Demasted yachts and motor boats with max air draft of 5.4m may pass under the Pont Chaban Delmas when the bridge is down. There is a delightful 155m visitors' pontoon, the Ponton d'Honneur on the west bank just downstream of the Pont du Pierre. It is run by the Mairie (not the port). See [www.bordeaux-metropole.fr/](http://www.bordeaux-metropole.fr/) for more details. Details of bridge lifting dates may be found at [sedeplacer.bordeaux-metropole.fr](http://sedeplacer.bordeaux-metropole.fr)