

## What comes after *Fantail*?

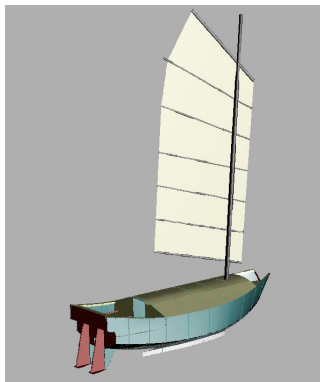
Plans to build a small junk-rigged yacht

Annie Hill

*This log started as an email to the Hon. Ed. explaining why the author wouldn't have time to write a log this year.*

*Fantail and Annie's efforts at junk-rigged sailmaking are described in Roving Commissions 52 for 2011, pp118-125.*

I've started to build myself another boat! I have been assured by someone who presumably knows me well, that I could reasonably be described as having lost my mind, but that's what happens when you turn 60.



I love *Fantail*, of course, but New Zealand's North Island has lots of shallow water and I want a boat that can take advantage of them. Also New Zealand frequently experiences side swipes from cyclones. They are extremely unpleasant, so when they are forecast it would be nice to be able to creep up a creek, surrounded by drying land, or snuggled amongst the mangroves.

Shallow draught would also mean that I could coat below the waterline with copper and epoxy, and scrub the boat clean, saving the cost of hauling out and antifouling.

And finally, *Fantail* is now 30 years old and I don't really want to be maintaining a boat of this era in another fifteen years.

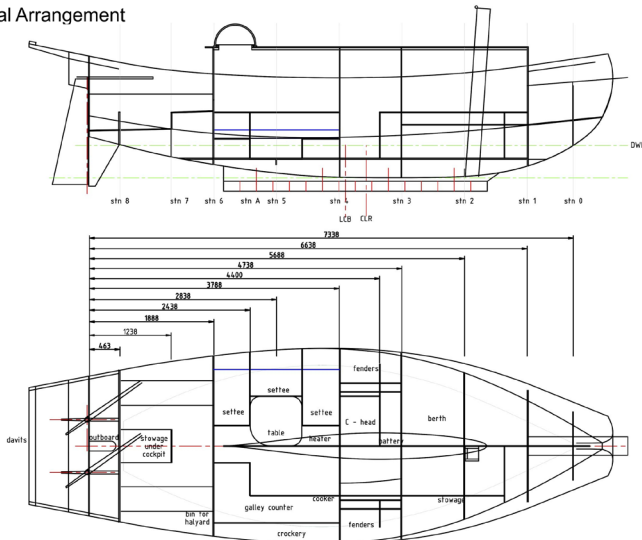
So I decided to build my perfect boat, which, hopefully, will see me out. The following are the design criteria I had set and how the designer, David Tyler, and I are going to achieve them:

### Hull:

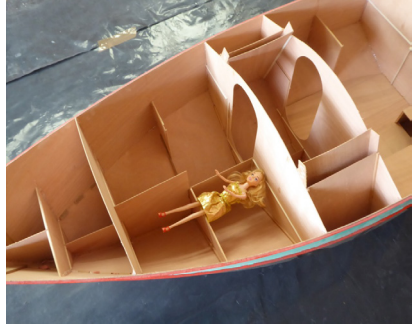
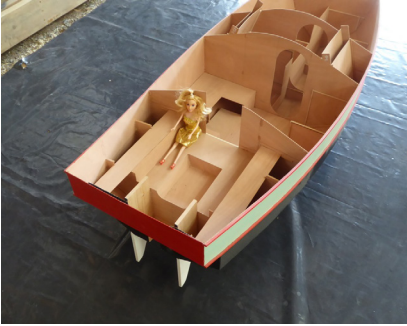
1. LOA 26ft (8m)
2. Simple and inexpensive to build - hard-chine plywood and epoxy
3. Minimal draught but with off-shore capability - 2ft 4ins (0.71m)
4. Offshore capable - ballast will be lower than ideal
5. About 3 ton(ne)s displacement - probably 3.3tons
6. Reasonable windward ability - stub keel and bilge boards



7. Single-mast junk rig
8. Full-width cabin (no side decks)
9. Rudder stern-hung - in fact two rudders on the stern
10. Outboard engine - 6hp, four-stroke Tohatsu (my choice)
11. Wind-vane self-steering - trim tabs on each rudder, and a vertical axis vane
12. Room for 120w solar panel on deck - in fact I will probably have two mounted on the davits out of all shadows, except from the mast when pointing into the sun
13. Watertight chain locker - it will be between two watertight bulkheads,



## What comes after Fantail?



giving a very secure bow arrangement

14. Room for a 5ft 1in (155cm) dinghy, because I own one and love her
15. Sufficiently robust to dry out regularly on oyster shells, so there is a solid 8in (20cm) steel keel running about 13ft fore and aft.
16. No slapping waves at anchor - the boat has five panels with a fairly narrow bottom section.
17. At least 5ft 1in (155cm) headroom, to give me full-standing headroom – in fact there will be 5ft 4in for my vertically-challenged friends
18. Good looking - at least to my eyes!
19. Chinese bow (and stern)
20. Mast in a tabernacle

### Accommodation:

1. Double berth - 4ft wide at the top, 3ft 6ins at the foot. Enough in my opinion
2. Spare berth for a guest - they'll have to make do with the settee
3. Heads with a "C-head" composting loo - screened off would be fine, but it will be a separate compartment inboard of the bilge boards
4. Good galley with ports opening over the side - 6ft galley with eight opening ports (recently bought second-hand)
5. Solid fuel heater
6. No sliding hatch - despite lively debate with the designer. Tough, it's

## Annie Hill

my boat!

7. No lift-out washboards - somewhat less debate, but my design was only accepted somewhat reluctantly (it works on *Fantail*)
8. Comfortable cockpit - no problem with the concept, but much discussion about the actual dimensions
9. Storage for paint, spare rope, etc. - lockers under the cockpit, accessible from behind the companionway steps
10. Bookshelves
11. Ample storage in lockers
12. Decent table for eating and writing - the saloon table can have a leaf on it if required
13. At least 2 galley drawers
14. Raised saloon so that I can see out – difficult, but we’ve managed it with a raised, three-sided dinette
15. No quarter berths
16. Pram hood
17. Water in 4l cans, probably under the cabin sole
18. Vegetable locker

The photographs are of a model of the boat that David and I made, although the final colour may be slightly different. The other model represents me: she is the right height for the scale in her high heels and topknot, but the rest of her proportions are a little bizarre!

David is helping me to build the boat in the early stages before he sails off over the horizon leaving me to carry on alone. I have heaps of



Annie under way

supportive friends here, however, so I feel fairly confident that when I need a second pair of hands there will be someone I can call on.